

A tremendous choice of tips for accurate and non-invasive treatments

SATELEC® has the largest and most innovative range of tips with more than 70 references that fit the same handpiece and allow clinical versatility.



Technical specifications

NEWTRON P5

Irrigation: Connects to the water supply

Water pressure: 1 to 5 bar

Handpiece:
NEWTRON SLIM F12901

Handpiece weight (g): 44

Device weight (g): 1650

Overall dimensions (DxWxH):
155x185x100

NEWTRON P5

B.LED

Irrigation: Connects to the water supply

Water pressure: 1 to 5 bar

Handpiece: LED
NEWTRON SLIM B.LED
blue ring F12900
white ring F12905

Handpiece weight (g): 48

Device weight (g): 1650

Overall dimensions (DxWxH):
155x185x100

Dental plaque disclosing liquid
F.L.A.G.™ for B.LED

NEWTRON P5xs

B.LED

Irrigation: 300 ml tank
(500 ml tank in option)

Irrigation flow rate:
5 - 40 ml/min

Handpiece: LED
NEWTRON SLIM B.LED
blue ring F12900
white ring F12905

Handpiece weight (g): 48

Device weight (g): 2100

Overall dimensions (DxWxH):
260x185x140

Dental plaque disclosing liquid
F.L.A.G.™ for B.LED

NEWTRON P5xs

Bluetooth B.LED

Irrigation: 300ml tank
(500 ml tank in option)

Irrigation flow rate:
5 - 40 ml/min

Handpiece: LED
NEWTRON SLIM B.LED
blue ring F12900
white ring F12905

Handpiece weight (g): 48

Device weight (g): 2100

Overall dimensions (DxWxH):
260x185x140

Dental plaque disclosing liquid
F.L.A.G.™ for B.LED

Bluetooth: remotely sets power
and irrigation

Handpiece dimensions (mm):110, Ø 18
Handpiece cord (m):2,04
Footswitch (dimensions and weight):70x30x100 mm (150 g)
Equipment classification:Classe I - BF type
Supply voltage:100-240 VAC 50/60Hz
Ultrasonic frequency:28 kHz - 36 kHz
Class of medical device:II a
(according to 93/42/EEC directive)

Sterilization of handpiece and accessories (wrenches, storage kits, etc.) in an autoclave according to EN ISO-17665-1 Standard.
See individual product instructions manuals for further information. These devices are manufactured according to the current regulations and standard (IEC 60601 1) and according to the EN ISO 13485 quality control certification system.

F.L.A.G.
FOR B.LED

SATELEC
ACTEON

SATELEC • A Company of ACTEON Group • 17 av. Gustave Eiffel • BP 30216 • 33708 MERIGNAC cedex • FRANCE
Tel + 33 (0) 556 340 607 • Fax + 33 (0) 556 349 292 • E-mail: satelec@acteongroup.com • www.acteongroup.com

Non contractual document - Réf. DA0001 - V1 - 02/2013 - Copyright © 2013 SATELEC. All rights reserved. No information or part of this document may be reproduced or transmitted in any form without the prior permission of SATELEC.



PURE
NEWTRON

English

SATELEC
ACTEON

PURE wellness

Introducing a brand new range of NEWTRON® ultrasonic generators. ACTEON® SATELEC® once again revolutionizes dentistry with clinical and technological innovations for gentle and painless treatments.

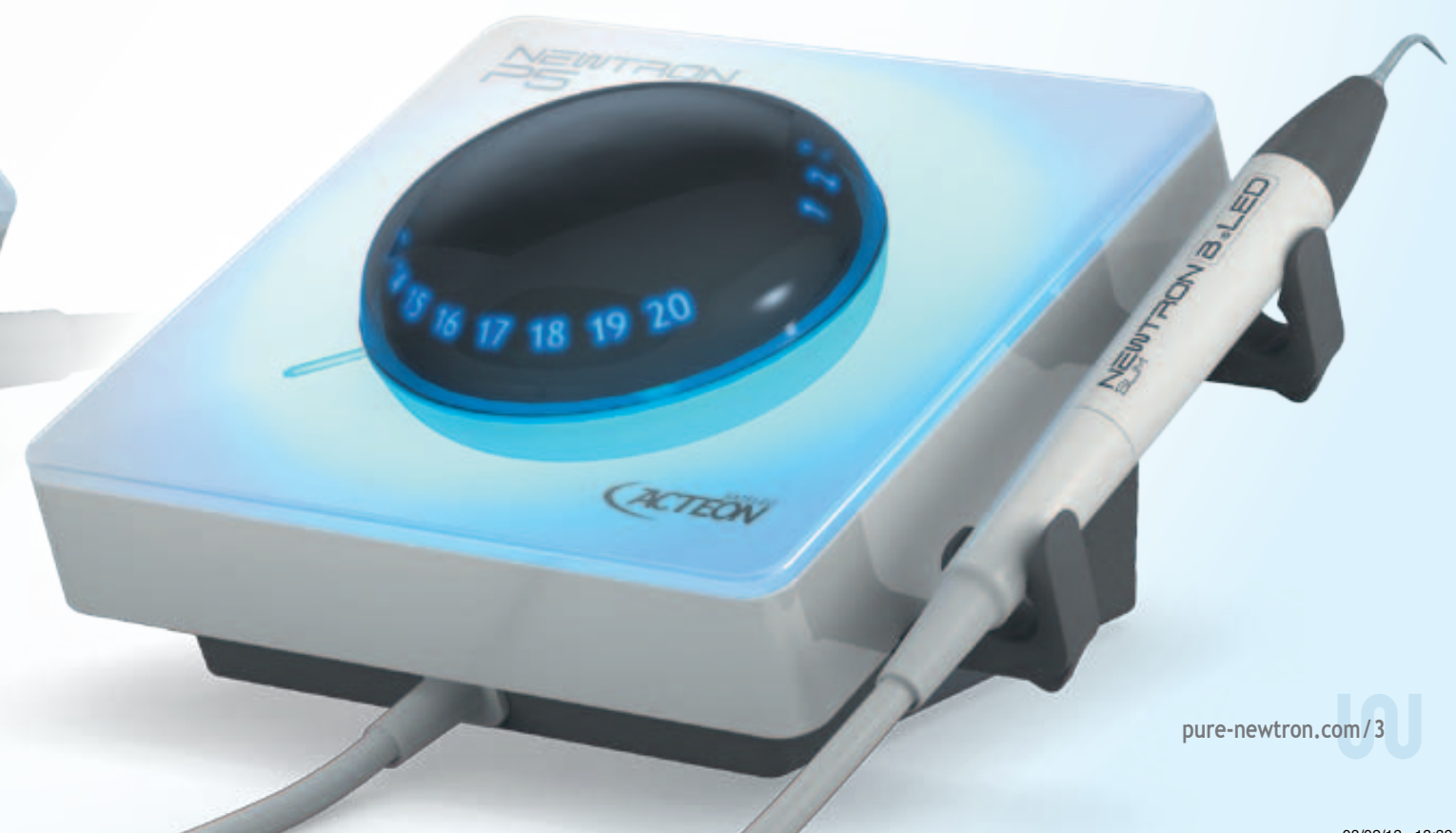
→ Dental plaque disclosing **BLED**

→ Remote control settings

Assured gain of time and wellness for you and your patient.

NEWTRON P5xs

NEWTRON P5





PURE
design

Improved ergonomics, better hygiene

Inclined front panel for better visibility

- > effortless interaction with the practitioner
- > easier access to settings and handpiece

Flat glass surfaces and uncluttered design

- > totally watertight and hygienic for simple cleaning

Removable power knob

- > easy decontamination

Intuitive settings

Easily choose the correct power settings for each tip according to the Color Coding System™ (CCS)

- > high power amplitude for precise settings
- > reduced risk of tip breakage

Illuminated power knob

- > high visibility of settings chosen
- > soothing lights diffusion

Exclusive handpiece holder

- > can be installed on the front or side of the device
- > reduced risk of handpiece fall
- > removable and autoclavable silicone

NEWTRON® SLIM B.LED handpiece, the perfect balance

Thinner body and more flexible cord

- > better grip for perfect treatments
- > detachable and autoclavable nose cone

All Titanium inside

- > no contact of liquid with stainless steel
- > extremely resistant to corrosion for a high longevity

Excellent intraoral and dental plaque visibility with the light rings

- > 6 High power LEDs (100,000 lux)
- > 2 white and blue LED rings exchangeable and autoclavable

PURE clinic

Multiple efficient and smooth treatments thanks to a great choice of tips

Largest and most innovative range of tips on the market

- more than 70 tips available
- clinical versatility

External irrigation system meets all clinical needs

Cylindrical tank and new lid

- secure and stable
- easy to fill even during treatment

300 ml or 500 ml graduated tank

- great visibility of volume used
- mix liquids directly into the tank

Effortless adjustment of irrigation

- autonomous purge
- removable knob for total hygiene

CRUISE CONTROL® SYSTEM automatically drives your tip vibration

CRUISE CONTROL®
SYSTEM

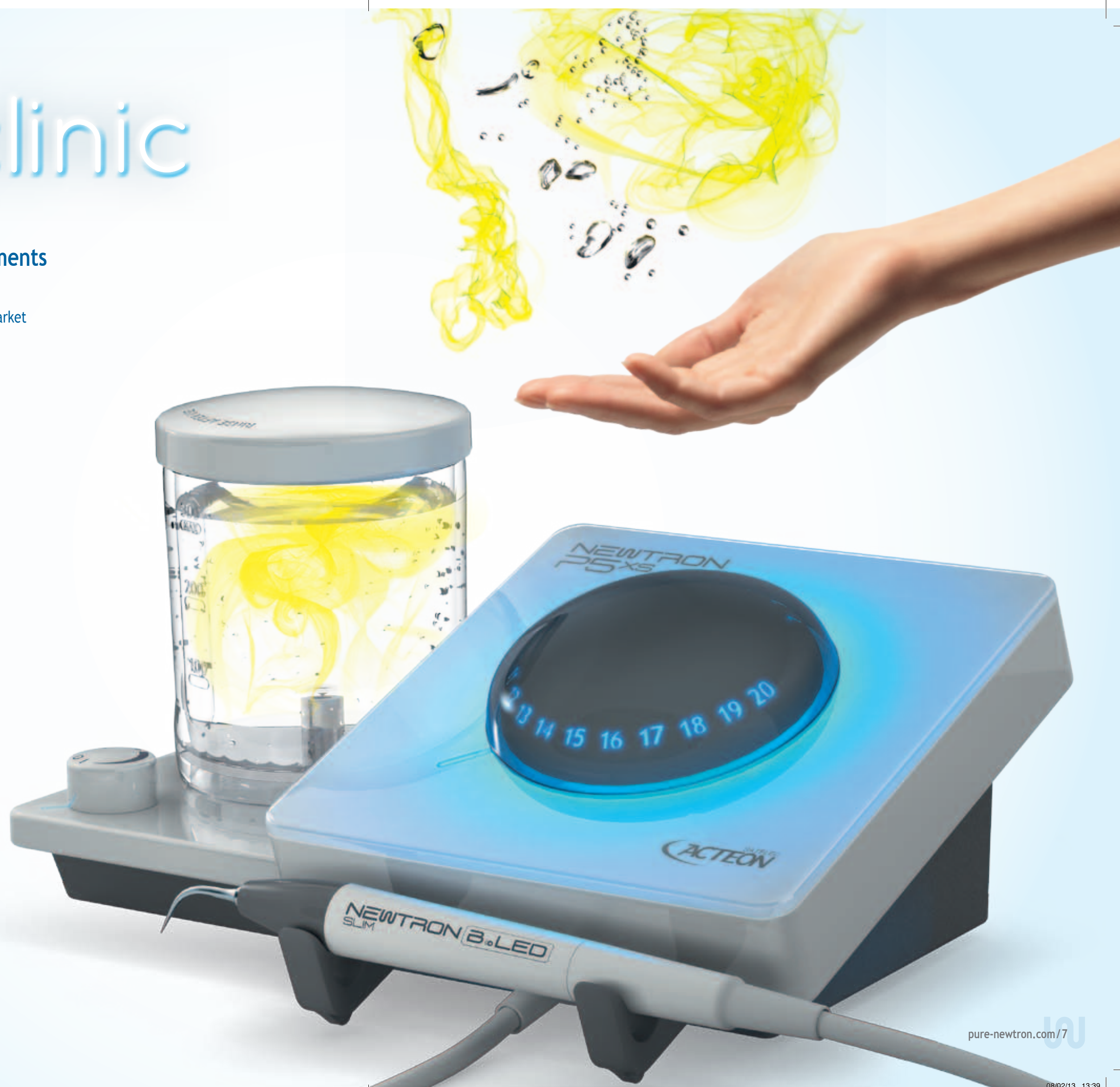
Maximum
efficiency

+

Gentle
treatment

+

Less user
fatigue



PURE revelation

B.LED technology is an exclusive SATELEC® innovation to simultaneously detect and remove dental plaque using fluorescence.

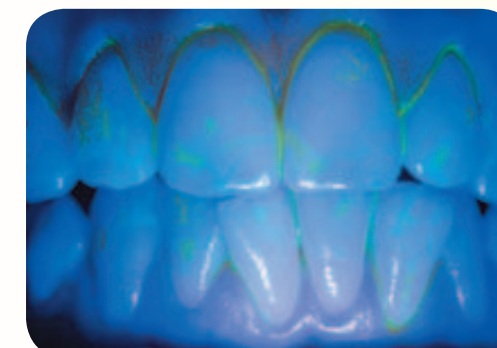
1. **Target** dental plaque with the dental plaque discloser F.L.A.G.™ for B.LED.
2. **Reveal** dental plaque by fluorescence thanks to the blue light of the NEWTRON® SLIM B.LED handpiece.
3. **Eliminate** dental plaque in a simultaneous, fast and complete way.

- Diluted in the irrigation tank of your NEWTRON® P5XS or applied directly on teeth with a brush, the operating procedure of F.L.A.G.™ for B.LED is simple and the result is amazing !
- The blue and white light of the LED ring provides a perfect balance between lighting the working area and a fluorescence of the discloser fixed to the plaque.

B LED



Without B.LED



With B.LED

DEFINITE ADVANTAGES for the practitioner

- visibly highlights dental plaque for easy identification and optimized movement
- treatment optimization by prioritizing affected areas
- saves time and profitability on scaling procedures

as for the patient

- greater comfort through a shorter and more efficient scaling procedure
- painless treatment

“ I use F.L.A.G. for B.LED everyday, and my scaling procedure time has significantly decreased! It is playful and stimulating to see the yellow spray and to see dental plaque so clearly. This B.LED technology allows me to notice the effectiveness of my treatment. ”



Take control with the P5XS app

1

PURE control

Adjust your device from your smartphone or tablet !

- 1 Download the P5XS app and activate Bluetooth on your smartphone or tablet.
- 2 Remove the power button of NEWTRON® P5XS to take control of the machine and screw your tip on your handpiece.
- 3 Click on the color ring of your tip and on the clinical drawings to choose the right treatment, and then select the wanted tip.
- 4 Power and irrigation recommended by SATELEC® are automatically set-up, you can start treatment !
You can always change the settings manually.

More precision, less breakage of tips, peace of mind

- Device remotely controllable by the practitioner or assistant
- Automatic power and spray setting
- How-to use tips videos



2



4



www.pure-newtron.com