

P R O C E N T E R  
D E L I V E R Y  
S Y S T E M



I N N O V A T I V E  
D E S I G N



Midmark's exclusive pop-up lid feature offers line of sight access to air and water controls. Fine needle valve adjustments allow for greater precision of drive air and lavage.



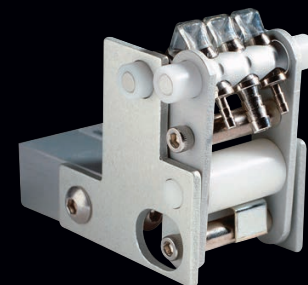
Designed as a true left/right delivery unit, the centrally located chair control offers up to four programmable positions and is standard on all chair mounted systems.



The unique air lock release buttons are ergonomically integrated into the unit handle for intuitive function and operation.



The Midmark Procenter Delivery System combines careful design, attention to detail and quality construction. Integrated controls and switches provide simple, yet refined, access for precision and ultimate flexibility. Available in chair, cabinet and wall mounted systems, the Procenter is designed to complement the way you work and deliver exceptional reliability.



**Kink Valve®**  
10 Year Warranty

Midmark's patented Kink Valve technology provides an independent control system for each handpiece and an unprecedented level of reliability and control. Unlike traditional valve blocks that require ongoing maintenance of O rings and diaphragms, this system requires no maintenance.

## A C C E S S O R I E S

The assistant's delivery system features integrated, programmable chair controls, precision syringe controls and an integrated vacuum solids collector.



The cuspidor is specially manufactured in Italy using fine vitreous China. Cup fill and bowl rinse functions can be adjusted to your preference.



Unlike most monitor mounts that are difficult to move, the unique gravity centered tilt of the Midmark mount allows for easy movement of the monitor.



### Integration

Reduce clutter and increase efficiency by integrating ancillary devices such as intraoral cameras, ultrasonic scalers, a curing light and up to two electric motors. Midmark has partnered with industry leaders to combine these devices with the quality and reliability of the Procenter Delivery System.

To complete the Procenter Delivery System, we offer a wide selection of assistant's instrumentation, cuspidors, monitor mounts and integrated ancillary devices. Offering more choices promotes greater flexibility in integrating technology and positioning the equipment to your preference, allowing you to deliver superior patient care.



## Cabinet and Wall Mounted

The innovative design of the chair mounted Procenter Delivery System is extended to the cabinet and wall mounted designs. Providing the same reliability and quality construction, these systems offer additional choices and greater flexibility.

The Freestanding Treatment Console delivery (shown left) places the instruments within easy reach while positioning the system out of view of the patient. Dentist's and assistant's holders can be converted from left to right. A 19" x 20" work surface and air and water quick connects are included as standard equipment.

### Side Delivery

The Procenter cabinet mounted delivery unit can be stored out of view and allows for unrestricted chair access for patient entry and exit. Available with a 13.5" mount arm and 16" flex arm.



### Wall Mount

The Procenter wall mounted delivery unit is available with a 24" mount arm and 16" or 24" flex arm, allowing you to customize the delivery unit to meet your operatory design requirements.



We have tried our very best to accurately represent product colors in this brochure. However, due to the nature of printed media, the color of actual products may differ slightly from how they appear on your particular printed piece. In order to confirm your color selection, we strongly recommend that you contact Midmark Customer Service at 1-800-MIDMARK to request a sample before placing your order.

**Midmark is an ISO 13485 and ISO 9001 Certified Company.**  
For more information or a demonstration, contact your Midmark dealer or call: 1-800-MIDMARK Fax: 1-877-725-6495  
Outside the U.S.A. call: 1-937-526-3662 Fax: 1-937-526-8214  
or visit our website at [midmark.com](http://midmark.com)

© 2009 Midmark Corporation  
60 Vista Drive P.O. Box 286 Versailles, Ohio 45380-0286  
Products subject to improvement changes without notice  
Litho in U.S.A. 007-0698-00 Rev. B1 (11/13)

